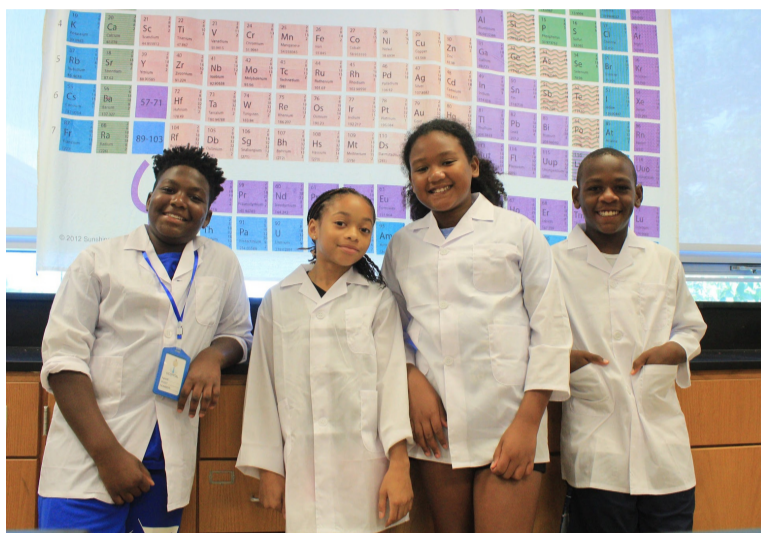




## OUR MISSION

To prepare and motivate students in grades K - 12, with a specific focus on underrepresented minorities and girls, to enter college and complete a degree in engineering or other STEM related fields of study

## 2022 ANNUAL REPORT



Year established: 1976

Number of full-time employees: 6

Number of part-time employees: 37

Annual revenue: \$1,265,510

Annual expenses: \$1,265,510

Geographic service area: Delaware



Donald L. Baker, II  
CEO



Stephen Wing  
Board Chair

## LEADERSHIP

Board Members:

Mr. Donald Baker - CEO

Mr. Stephen Wing - Chair

Mr. Travis Robinson - Chair Elect

Mr. Myron Neal - Finance Chair

Ms. Peri Hutt - Secretary

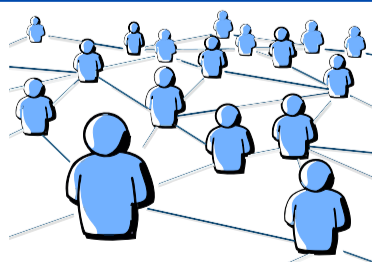
Ms. Lisa Hoffman

Ms. Ruth Mathis-Tucker

Mr. Brandon Jones

Ms. Natasha Sanders

Dr. Bryan Tracy



## HOW WE MAKE AN IMPACT

FAME, Inc. Inspires Career Confidence through Academics, Workforce Development, and Innovation. Academic programming serves students grades K-12, offering year-round STEM education and enrichment programming. Additionally, FAME, Inc.'s Aligning Meaningful Employment (AME) 302 Initiatives develop Delaware's future workforce through programs, paid work experiences, and an online digital ecosystem to connect talent to opportunity.

## GIVING OPPORTUNITIES

With your support, FAME, Inc. can propel Delaware's workforce forward, launching leaders into the world of STEM. Give today at [famedelaware.org](http://famedelaware.org) and support our future STEM leaders. Your commitment is essential to ensuring student success.

## VOLUNTEER OPPORTUNITITES

FAME, Inc. needs volunteers to serve as speakers and mentors to students of all ages, providing insight and guidance from their professional pathway. Individuals interested in volunteering should contact Casey Davis at [CADavis@fameinc.org](mailto:CADavis@fameinc.org)

## PROVEN SUCCESS

"I wish I knew about FAME back in high school. High School students should learn the financial tips and tricks FAME teaches."

- Kimberly Santiago  
FAME, Inc. AME 302 Alumni



Facebook: @FAMEDelaware  
Twitter: @FAME\_Delaware  
Instagram: @FAMEInc\_DE  
LinkedIn: FAME, Inc. Delaware



## A DESTINATION FOR ACADEMICS, WORKFORCE DEVELOPMENT, AND INNOVATION

### ACADEMICS

**490 Students Served**

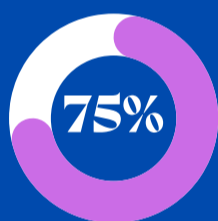
Students received hands-on, intensive programming for 6 weeks during the summer as well as after-school during the school year. FAME, Inc. programming includes STEMulate Change for students grades K-6 and CORE for students grades 7 -12.



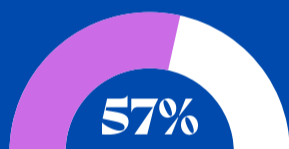
CORE students who maintained a GPA of 3.0 or higher



Students who increased STEM aspirations



Students who learned something new in STEM



Students who declared STEM majors

### WORKFORCE DEVELOPMENT

**5,312 Individuals Served**

FAME, Inc.'s Aligning Meaningful Employment (AME) 302 program, is creating a robust workforce pipeline. AME 302 builds foundational skills, connects talent to opportunity, and aligns training, education, and other wrap around services. Through a partnership with Delmarva Power, high school juniors and seniors are trained and administered the Construction and Skilled Trade (CAST) Exam. Students who pass are offered employment with Delmarva Power.

Additionally, available certifications include, but are not limited to: 21st Century Skills, Customer Service, Financial Literacy, Office Specialist

**5275**

Tallo Profiles Created

**37**

Awarded Certifications



### THE LEARNING LAB



FAME, Inc. is renovating a state-of-the-art, nearly 17,000 sqft headquarters located at 2005 Baynard Boulevard, Wilmington DE 19802. The Learning Lab will include a Career Confidence Center, expanding FAME, Inc.'s workforce efforts to align job and skill training, remedial education, and other support services. Additionally, this space will include Academic/Industry focused laboratories for students grades K -12 to offer the next generation hands-on activities featuring the latest technology. This headquarters will serve over 5,000 individuals annually, expanding FAME, Inc.'s footprint.

